

CASIT DI CARLO CESARE RAMELLA & C. SNC
 Strada Pietra Alta 1 – 10040 CASELETTE (TO) Italy
 Tel. 011-9688230/170 Fax 011-9688363
 Partita IVA/COD. FISC. 0050590017
 Cod. Destinatario **BAMET11**
 Tel. Torino N. 85462 - C.C.I.A.A. 333122
 M. T0024777 – COD. EORI IT00506590017
 Sito www.casit.it/itv E-Mail info@casit.it



Italian Openings & Automation

SINCE 1994



ISO 9001:2015
 Cert. n. 30145
 Quality System Certified

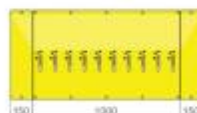
MADE IN ITALY

Cancelli Automatici - Shed - Infixi Telecomandati

TRAFFIC PLATE

TRAFFIC PLATE TYRE KILLER WITH MECHANICAL MOTION, IS COMPOSED BY IRON SPURS WITH 10MM OF THICKNESS. IN ORDER TO IMPROVE ITS EFFICIENCY, IT CAN BE INSTALLED AND USED IN COUPLE WITH OTHER MAC'S DEVICES.

- MECHANICAL MOTION WITH SPRING COMEBACK.
- THE PRODUCTS IS HOT GALVANIZED IN ORDER TO IMPROVE ITS RESISTANCE TO THE WEAR.
- WIDE RANGE OF CUSTOMIZATION: CUSTOM COLOURS (SEE ACCESSORIES AND OPTIONAL ITEMS SHEET).



Technical Data

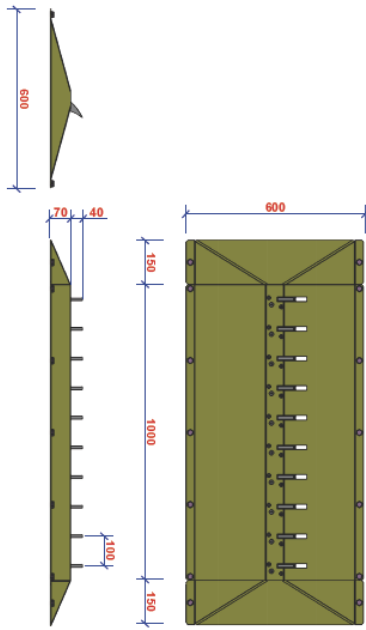
TRAFFIC PLATE	Cod.	TRAFFIC PLATE
MATERIAL OF THE SPURS		FE360 / INOX304
FINISHING OF THE SPURS		FE360 / INOX304
FORMWORK AND STRUCTURE TREATMENT		HOT GALVANIZED
COVER FINISHING EXTERNAL MODEL		POWDER PAINTED
COVER FINISHING UNDERGROUNDED MODEL		HOT GALVANIZED
THICKNESS	mm	5
LOAD CHARGE RESISTANCE	KG	40.000
* = standard		

TRAFFIC PLATE UNDERGROUNDED 1000MM	Cod.	€
FORMWORK IN STAINLESS STEEL 304	0390220	230,00
HEAD FOR FORMWORK	0390201	45,00
JOINT FOR FORMWORK 304	0390202	45,00

TRAFFIC PLATE COMPLETE WITH FORMWORK (MOVEMENT MECHANISM IN HOT GALVANIZED FE360)	0391120	1.500,00
TRAFFIC PLATE COMPLETE WITH FORMWORK (MOVEMENT MECHANISM IN STAINLESS STEEL)	0391220	1.900,00

TRAFFIC PLATE EXTERNAL 1000MM	Cod.	€
HEAD TRAFFIC PLATE	0391390	140,00
TRAFFIC PLATE COMPLETE WITH FORMWORK (MOVEMENT MECHANISM IN HOT GALVANIZED FE360)	0391320	1.500,00
TRAFFIC PLATE COMPLETE WITH FORMWORK (MOVEMENT MECHANISM IN STAINLESS STEEL)	0391420	1.900,00

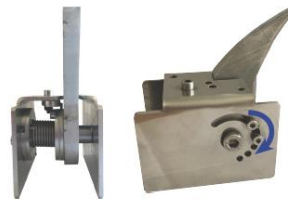




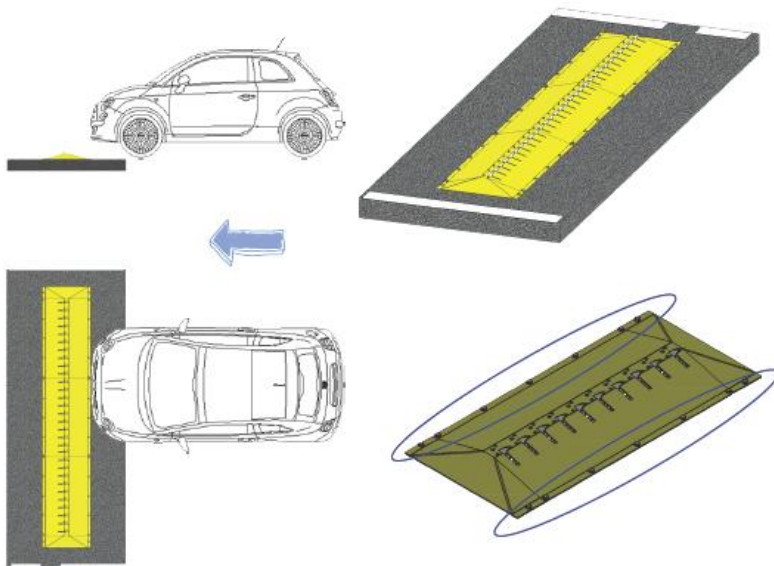
DIMENSIONS

How to adjust the spring:

1. Unscrew the bolts
2. Turn the mechanism of the spring clockwise
3. Screw the bolts in the next holes



HORN WITH WEIGHT MOVEMENT



Position the Traffic Plate City:

- Make holes in the ground, referring to the holes on the plate shown in the figure.
- Install the Traffic Plate City in the ground, using suitable anchors according to the soil composition.

